

# Fairfield Presbyterian's Fairton Meeting House, 1850-Present

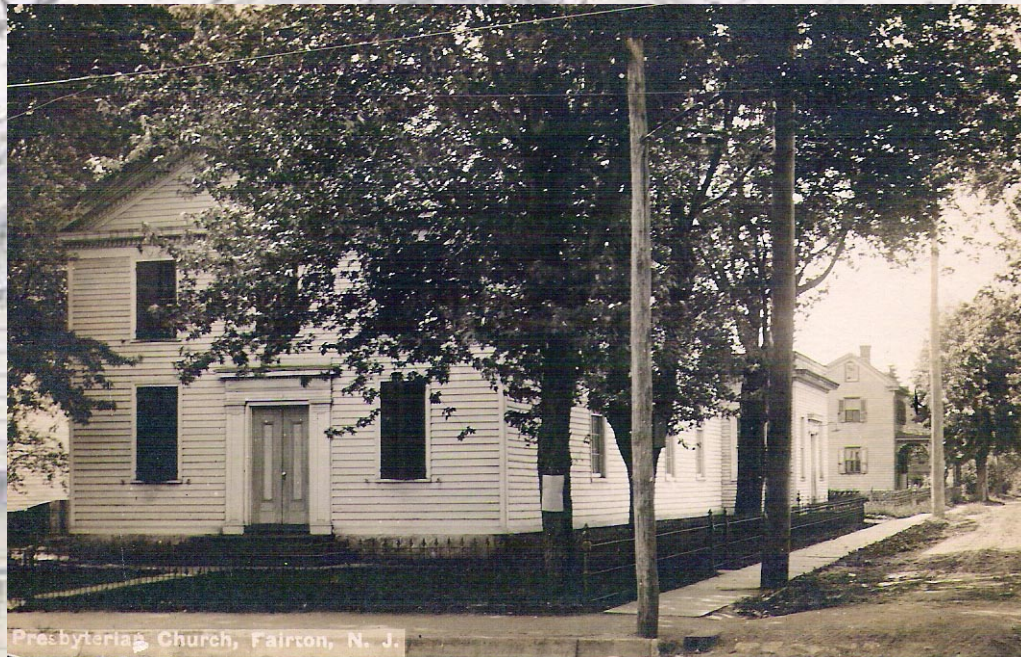


Fairfield's 1850 Meeting house on a 1906 post card.



The opposite side of the post card to Miss Emma Smith,  
eventually to be Mrs. Clarence Johnson.



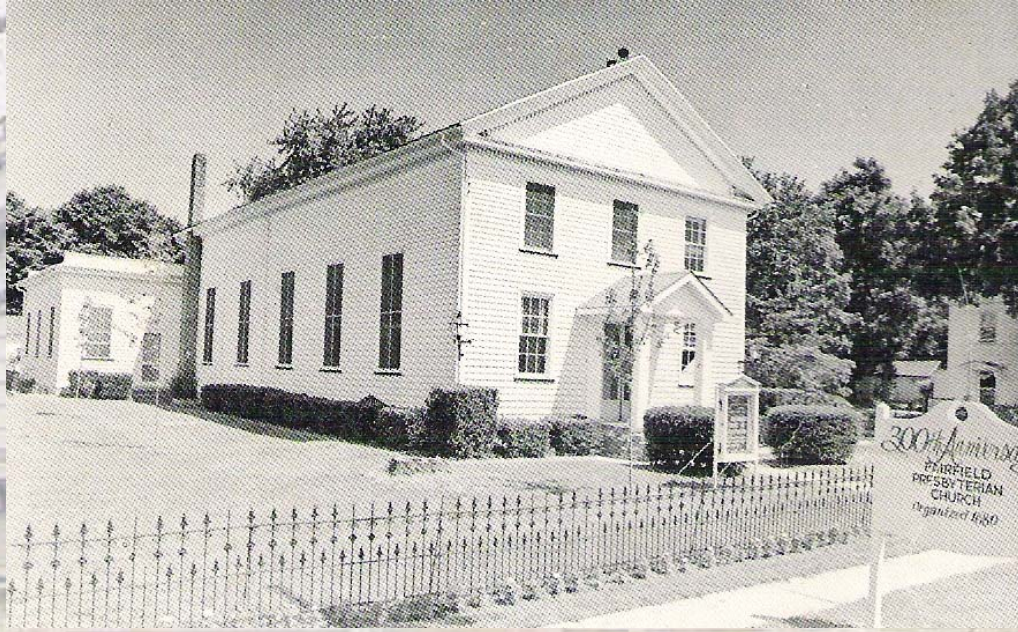


Another post card, no date on the back, but looks to be the same time as the post card above.  
Note the shutters on the windows.



No date is give for this photo (mid 1960's is a guess), but the shutters are gone, a sign is added along with a pair of lamps on the door posts.  
The church looked like this until 1979 when a portico was added over the porch.





This is the meeting house in 1980—the 300<sup>th</sup> anniversary, Notice the portico over the porch stoop, the shrubs, the newly planted maple trees and the lamps on the corners of the building.

#### INTERIOR IMPROVEMENTS

The church sanctuary has seen its share of improvements. In November 1979, polished brass chandeliers were hung in the sanctuary, replacing the simple glass globes that had been installed in the 1930s. These beautiful fixtures were a gift of Mrs. Phyllis Nitshe in memory of her parents, Mr. and Mrs. Frank Preston. A matching lamp for the narthex was soon after installed, in memory of Robert Smythe.

Following the sudden death in December 1979 of Karl Dix, members and friends expressed their tributes to this man, a capable farmer and trustee and devoted husband and father, in memorial gifts to the church. These were used in the renovation of the church entrance, replacement of the two interior doors with a single double door, new lights at the back of the church and on the exterior, a new floor for the narthex, and a covered porch for the front steps; these were all suggestions of his wife, Florence. (*The Fairfield Presbyterians, Puritanism in West Jersey*, Pgs. 34-35, Lawrence C. Roff)